



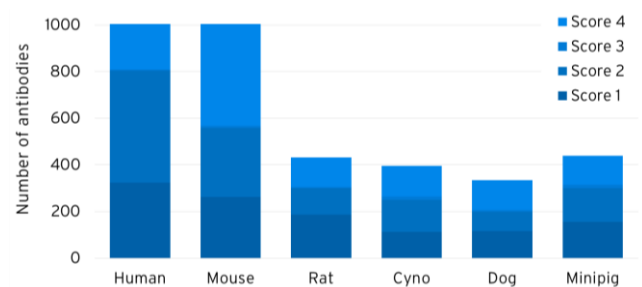
DigiWest[®] Protein Profiling Services

DigiWest

- Is a novel proprietary immunoassay technology (Treindl et al., Nature Comm 2016)
- Combines Western blotting with the multiplexing power of the Luminex[®] bead system
- Allows simultaneous quantification of up to **800** analytes from just 20-60 µg of protein sample
- Is fully customizable, based on pathway panels with currently 1,215 antibodies incl. 321 PTMs
- Enables profiling from various materials (cells, organoids, tissues, PDX) incl. FFPE samples
- Represents a versatile post-genomics tool for numerous applications in translational research
- Is being offered on a fee-for-service basis

DigiWest for Multiple Species

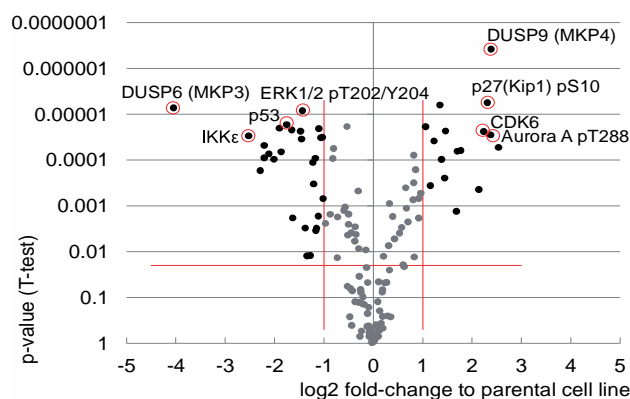
Validated DigiWest antibody panels are available for human, mouse, rat, dog, minipig & cynomolgus



- Hundreds of high-quality antibodies allow for in-depth pathway activity profiling studies in areas like oncology, safety and in vivo pharmacology

DigiWest for Biomarker Discovery

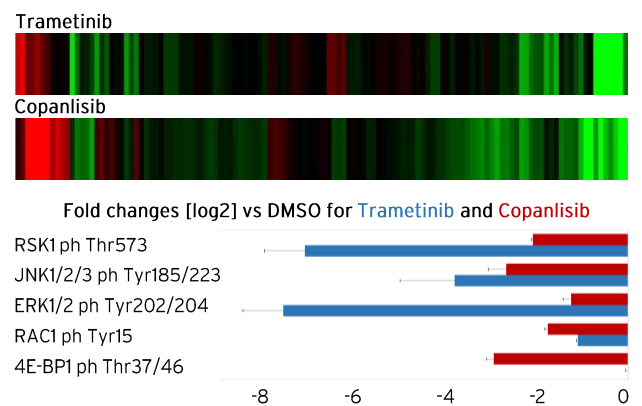
Profiling of Lapatinib resistant vs parental cell lines with **185** selected total & phospho antibodies



- DigiWest profiling yields detailed insights into the mechanisms of drug resistance, for identification of biomarkers and precision medicines

DigiWest for Lead Characterization

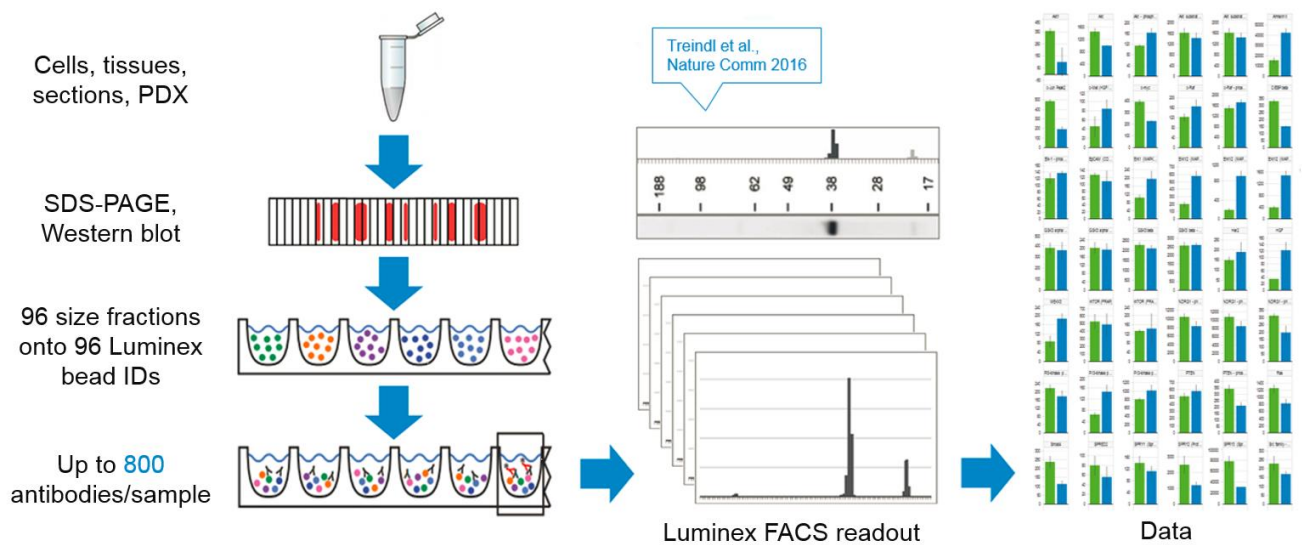
Cell-based profiling of anti-tumor compounds with **156** selected pathway-specific antibodies



- DigiWest profiling of total & phospho proteins enables an in-depth MoA characterization of investigational compounds vs reference drugs

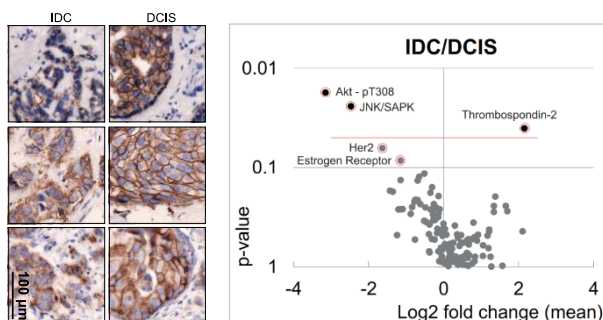
DigiWest[®] Protein Profiling Services

How DigiWest Works



DigiWest from Tissue Sections

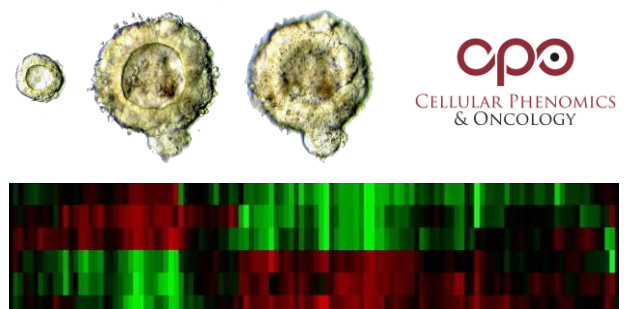
Laser Capture Microdissection (LCM) of invasive (IDC) vs non-invasive (DCIS) mammary carcinoma



- DigiWest profiling of 160 protein analytes from precious amounts of tissue materials reveals distinct markers of tumor invasiveness

DigiWest from Tumor Organoids

Protein profiling of tumor signaling using cpo's primary patient-derived 3D cell models (PD3Ds)



- DigiWest profiling with a customized panel of 122 total & phospho proteins sheds light into the individual tumor's biology - beyond genomics